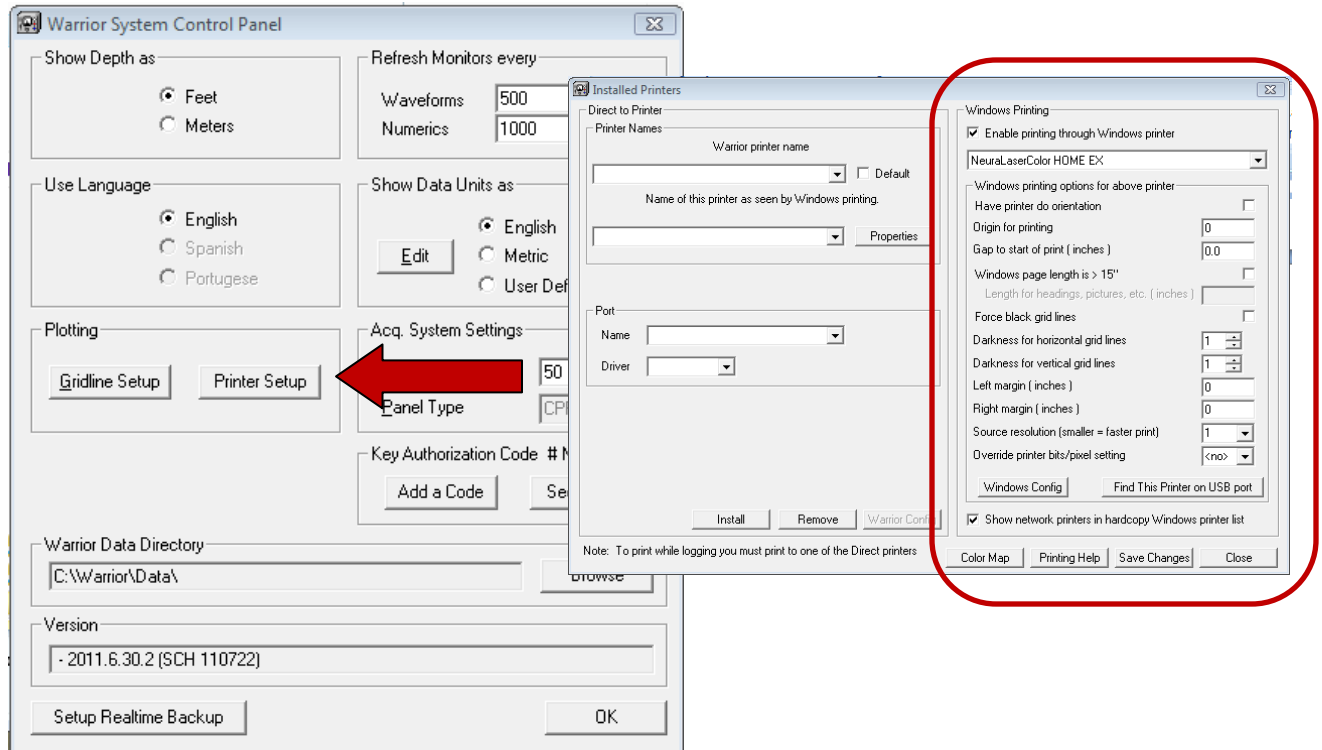


## Printing to Neuralog Printers from Warrior PPlot32.exe

This document describes printer setup to print to Neuralog printers from the Warrior application, PPlot32.exe. Warrior PPlot32 is a 32-bit application.

Install Neuralog print driver for NeuraLaserColor or NeuraJet17 printer.

Run Warrior Control Panel Control32.exe to see the Warrior System Control Panel. Select the Printer Setup button. This will bring up the Installed Printers Panel.

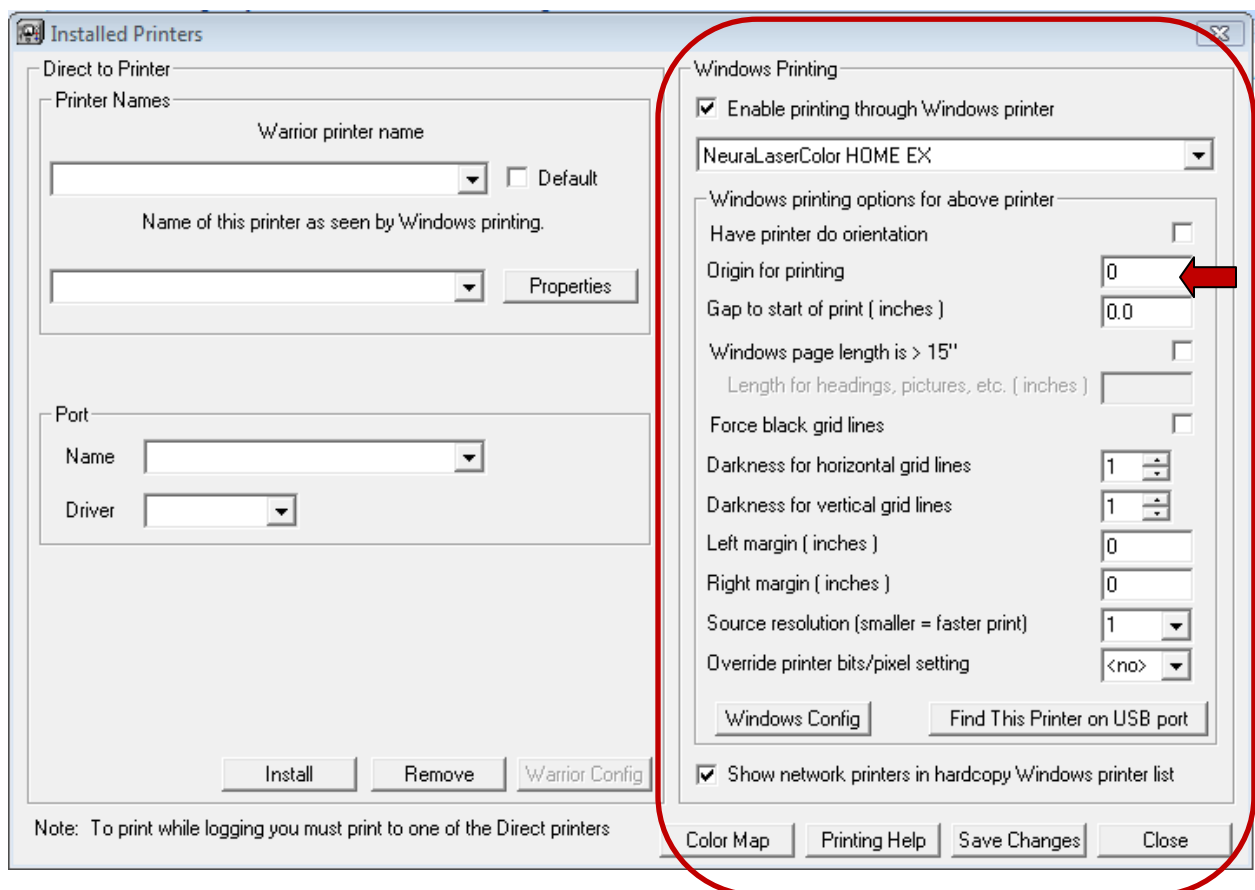


Neuralog printers use the **Windows Printing** side of the Installed Printers Dialog. Neuralog printers do not use any parameters on the **Direct to Printer** side of the Dialog.

## NeuraLaserColor

For NeuraLaserColor make sure the parameters match those below.

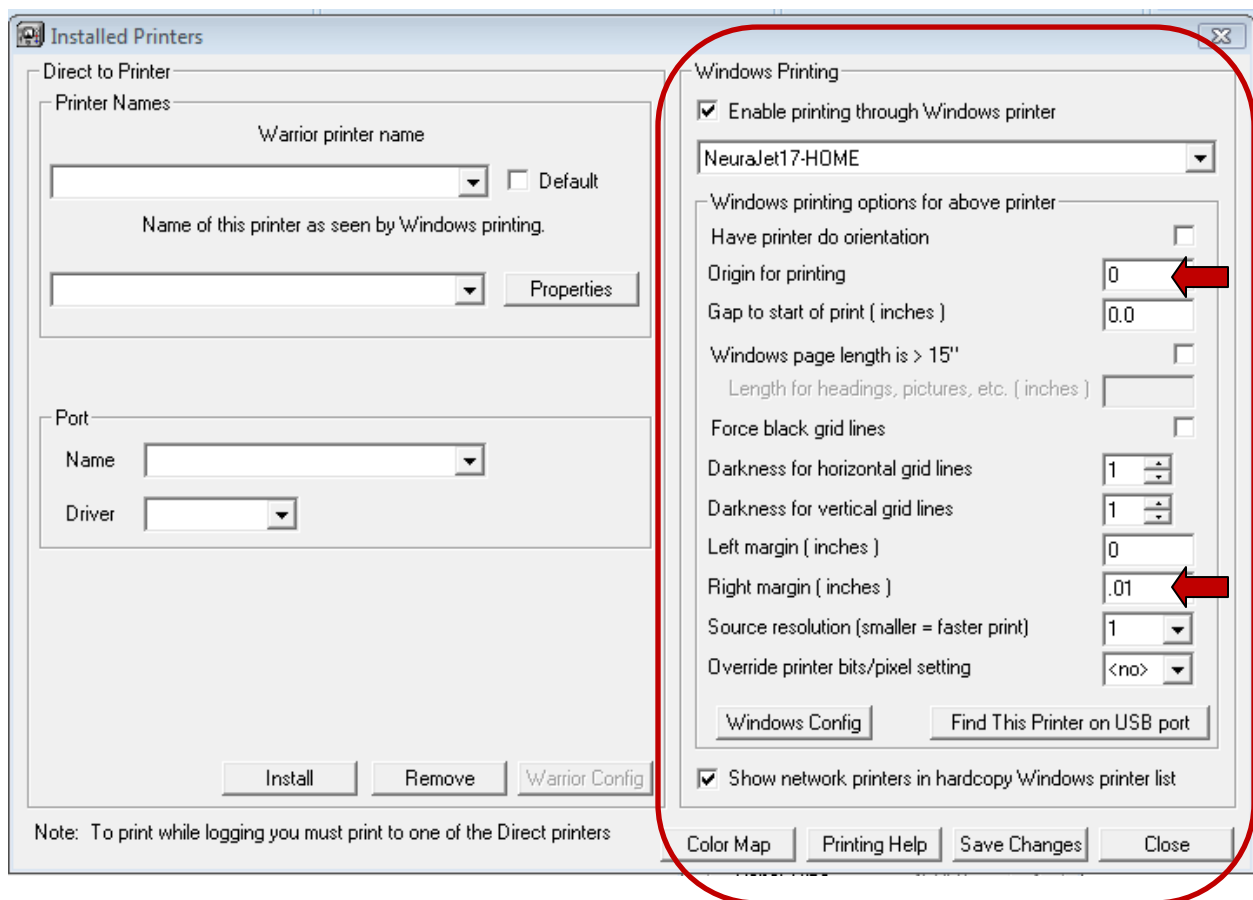
- Make sure **Enable printing through Windows printer** is checked.
- Set **Origin for printing** to 0.
- Other parameters remain the same.
- Select **Windows Config** button to bring up the NeuraLaserColor Print Panel. From this panel you can set print quality, the same as with any application. You should not need to change any parameters on the NeuraLaserColor Print Panel.



## NeuraJet17

For NeuraJet17 make sure the parameters match those below.

- Make sure **Enable printing through Windows printer** is checked.
- Set **Origin for printing** to 0
- Create a minimal **Right Margin** of .01.
- Other parameters remain the same.
- Select **Windows Config** button to bring up the NeuraJet17 Print Panel. From this panel you can set print quality and select page size, the same as with any application. You should only need to select the correct page size on the Print Panel.

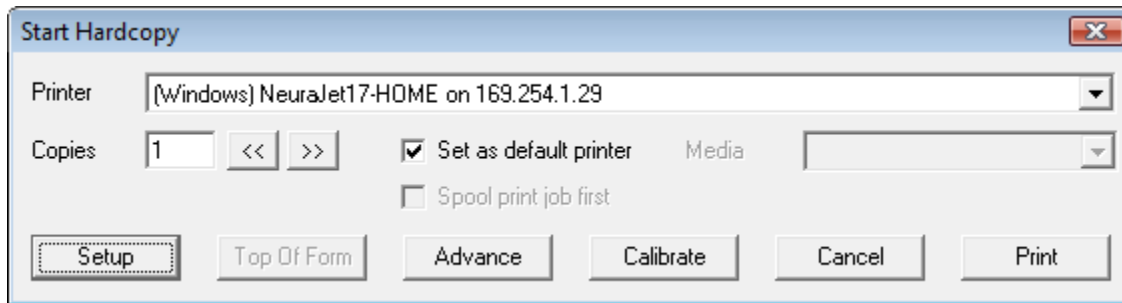
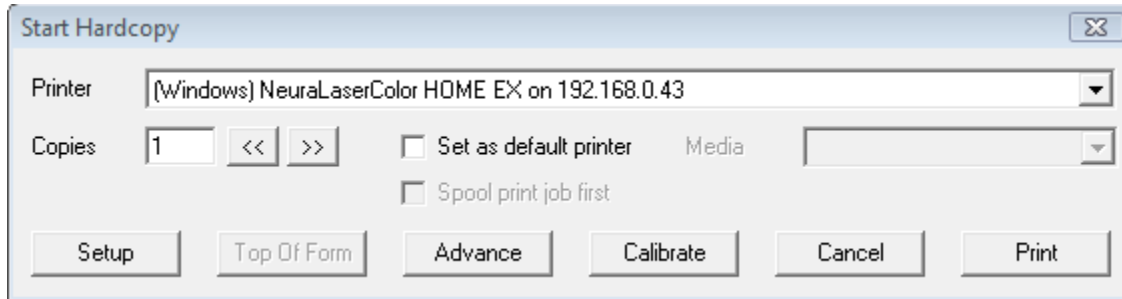


Neuralog, Inc.

To print from **PPlot32.exe** Select the **Plot Job** and then choose **Action->Harcopy**.

You may access the NeuraLaserColor Print Panel (or NeuraJet17 Print Panel) by selecting the **Setup** button. This brings up the same panel as the **Windows Config** button, so the parameters should already be set.

Neuralog printers do not use **Advance** or **Calibrate** buttons.



Select **Print** to send the job to the selected printer.

NOTE: NeuraJet17 requires a small Right margin value for the correct margin to be placed on the print.

NOTE: If a printer port is changed, PPlot32.exe must be restarted for the application to read the printer port. If the program is not restarted it will not read the updated port number and the file will not print.

NOTE: Warrior version tested was Warrior Cased Hole software version 110722, demo mode. Testing done on 9/27/2011.